

Product information

Temperature probe

Temperature probe  
**GTL 244**



- Hygienic design and easy-to-sterilize measuring point
- Sensor made of stainless steel and PEEK
- Thermally decoupled

Characteristic

The flush mounted temperature probes are designed for e.g. temperature monitoring in CIP- / SIP- circuits and temperature measurements in tanks with stirrer or in milk tanks.

The probes can be provided with or without integrated head transmitter.

Specifications

Temperature ranges	: ambience:	-40..+80 °C
	: probe tip:	-40..+150 °C
		CIP- / SIP-temperature: 140 °C < 30 min.
Measuring resistor	: Pt100	
Accuracy	: class A, class AA	
Electric connection	: cable screwing M16x1.5 (PG)	
	: cable connection M12- plug (1.4305)	
Process connection	: G 1/2" hygienic	
Clamping torque	: 5..10 Nm	
Probe head	: Ø 59 mm	
Probe tip	: Ø 10 mm	
Response time	: T <sub>90</sub> ≤ 15 s	
Working pressure	: max. 10 bar	

Material

Probe head : 1.4305  
 Tip : 1.4404, PEEK

Protection class : IP67 / IP69K  
 CE conformity : EN 61326-1:2013 / -2-3:2013

Transducer GTML1

Integrated head transmitter

Measuring range : -10..+40 °C \* / 0..50 °C \* / 0..100 °C \*  
 0..150 °C \*  
 or freely in range -20..150 °C \*\*

Power supply : 10..30 V DC

Measuring output : analog, 4..20 mA, 2-wire

Output signal in case of error : < 3.75 mA or > 21.5 mA, selectable \*

Filter : integrated low-pass, 4-step \*

Reaction time : < 150 ms (filter 0), < 300 ms (filter 1)  
 < 800 ms (filter 2), < 3 s (filter 3)

Working temperature : -40..+70 °C

Accuracy : < 0.2 % FS

Temperature drift : < 0.01 % FS / K

Transducer GTML1 with on-site display

Transducer with integrated **on-site display (LCD)** only in combination with electric connection: cable connection M12 plug and integrated transducer (for further information see transducer GTML1).

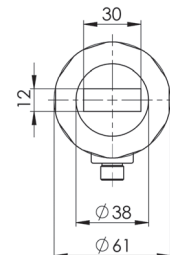
Display : 4-digit LCD

Displayed unit : °C or °F, selectable \*

Resolution : 0.1 °C or 1 °C, selectable \*

Background illumination : **activatable**, deactivatable \*

Working temperature : -20..+60 °C



- \* Programmable via GTL - Configuration tool (accessories) or buttons (only with on-site display)
- \*\* Programmable via GTL - Configuration tool (accessories)

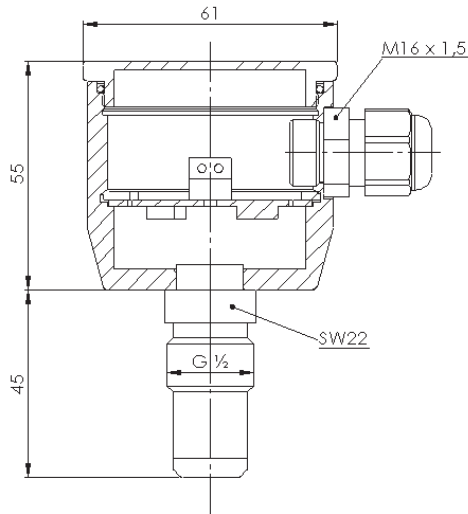
Note: The default settings are marked in **bold**.

continued on next page

**Product information**

**Temperature probe**

**Dimensions**



**Product key**

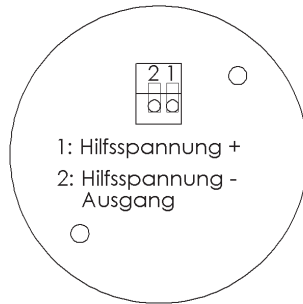
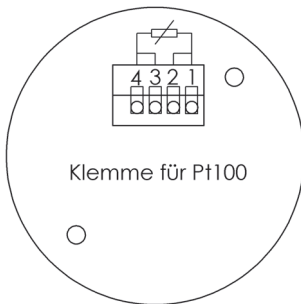
GTL  -  -  -  -  -  -

**Connection**

Electric connection: cable screwing M16x1.5 (PG)

without transducer (4-wire):

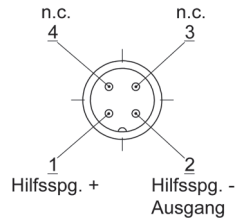
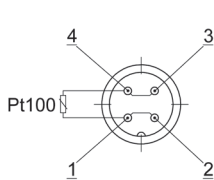
with transducer (2-wire):



Electric connection: cable connection M12-plug (1.4305)

without transducer (4-wire):

with transducer (2-wire):



<b>1. Design type</b>	244	G 1/2" flush mounted
<b>2. Electric connection</b>	P	cablE screwing M16x1.5 (PG)
	V	V2A cablE screwing M16x1.5 (PG)
	M	cablE connection M12-plug
<b>3. Accuracy class</b>	A	class A
	D	class AA (1/3 class B)
<b>4. Transducer</b>	0	without transducer
	M	permanently integrated transducer GTML1, without display
	V	permanently integrated transducer GTML1, on-site display (LCD)
	R	exchangeable head transducer RT420
	T	exchangeable head transducer T19
<b>5. Measuring range</b>	0	without transducer
	1	measuring range -10..+40 °C (-50..+50 °C for head transducer T19)
	2	measuring range 0..50 °C
	3	measuring range 0..100 °C
	4	measuring range 0..150 °C
	B	transducer with special measuring range in °C (not possible for head transducer T19), state special measuring range separately e.g.: 0..75 °C or -20..+30 °C. Mind the minimum range of 50 °C.
<b>6. Option</b>	00	without option
	H	with neck tube
<b>7. Certificate DIN EN 10204 (indicate only when required, multiple responses possible)</b>	WZ2.2	factory certification 2.2
	APZMAT	acceptance test certificate 3.1 for material (in contact with products)
	APZ2P	acceptance test certificate 3.1 with 2 measuring points (0°C / 70°C)
	APZ3P	acceptance test certificate 3.1 with 3 measuring points (0°C, 70°C + 1 test point freely selectable)
	APZ4P	acceptance test certificate 3.1 with 4 measuring points (0°C, 70°C + 2 test points freely selectable)

**Notes on on-site display (LCD):**

Permanently integrated transducer GTML1 (programmable) with on-site display only in combination with electric connection: cable connection M12 plug.

Information on suitable weld-in sleeves can be found in product information GHMadapt/Accessories.