

Product Information

pH Measuring Transducer GPHU



- With local display and galvanic isolation
- Automatic and manual temperature compensation
- 2-point calibration
- 4 to 20 mA version with 2 wires: Power supply via current loop (optionally with 0-10V 3-wire)

Features

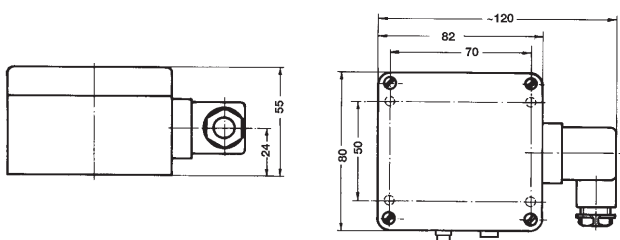
The GPHU is used in control, measurement and monitoring tasks, e.g. in environmental and medical technology.

Any standard pH electrode with a BNC or Cinch socket can be used for the GPHU. In addition, the GPHU has a Pt1000 temperature input for connection of electrodes with integrated temperature sensors or a separate Pt1000 sensor via two banana sockets. The temperature compensation can also be adjusted manually with buttons.

Technical data

Measuring range	: 0.00..14.00 pH
Accuracy	: 0.02 pH ±1 digit (at nominal temperature 25 °C)
Output signal	: 4..20 mA, (2-wire) 0..10 V (3-wire)
Galvanic Isolation	: Galvanically isolated input
Auxiliary energy	: 12..30 V DC at 4..20 mA 18..30 V DC at 0..10 V
Permissible resistance	: $R_A[\Omega] = (U_V [V] - 12V) / 0.02 A$
Permissible load	: $R_L > 3000 \Omega$
Electrode	: all standard pH electrodes are suitable No pH electrodes included
Input resistance	: $10^{12} \Omega$
Electrode connection socket	: BNC / Cinch
Temp. compensation	: -30..+150 °C, manually adjustable with buttons or automatically by means of external Pt1000 sensor
Temperature input	: 2x banana socket Ø 4 mm, for Pt1000 sensor
Display	: 10 mm height, 4-digit display
Electrical connection	: Angle connector according to EN 175301-803/A,
Working temperature	: 0..50 °C
Housing	: ABS
Ingress protection	: IP65 (excluding electrode and temperature connection sockets)

Dimension



Ordering code

GPHU14MP - - -

1. 2. 3.

1. Electrode connection socket	
BNC	BNC socket
CINCH	Cinch jack
2. Output signal	
A1	4..20 mA
V2	0..10 V
3. Option	
00	No options
MB	Limited measuring range (please specify range separately, e.g.: 2.00..10.00 pH)

Order example:
 GPHU14MP-BNC-A1-00

Accessories

GTF 2000 WD-B

Waterproof Pt1000 temperature sensor with 2 banana plugs Ø 4 mm, measuring range: -20..+105 °C

Accessory electrodes

GE 126-BNC-L05	pH electrode, extremely low maintenance/calibration, adapter 1/2" NPT, Ø26.4 mm, 5 m cable
GE 108-BNC-L02	pH electrode, pressure-resistant to 6 bar, adapter PG13.5, low-maintenance, gel-filled, 2 m cable
GE 117-BNC-L02	pH electrode, pressure-resistant to 6 bar, adapter PG13.5, low-maintenance, gel-filled, with integrated Pt 1000 temperature sensor, 2 m cable
GE 173-BNC-L01	pH electrode, pressure-resistant to 6 bar, adapter PG13.5, alkaline-resistant, ground diaphragm, 1 m cable (optionally with S7 connection)
GE 171-S7	pH electrode, pressure-resistant to 6 bar, adapter PG13.5, S7 connection, sterilisation / autoclave-compatible
GE 117	pH electrode with integrated Pt1000 sensor 1x BNC plug and 1x banana plug Ø 4 mm and PG 13.5 thread, pressure-resistant to 6 bar
GE 100 BNC	Standard electrode, BNC plug (for technical data, see GE 100)

Electrode adapter accessories

GEAK-2S7-BNC	Adapter cable S7-BNC, 2 m
GEAK-5S7-BNC	Adapter cable S7-BNC, 5 m
GWA1Z	Thread adapter from PG13.5 to G1", plastic
PG 13.5	Plug-in thread adapter for pressureless insert, with PG 13.5 male thread (electrode plug-in without adapter)

Consumable accessories

Ready-to-use buffer solutions and working sets, see extra data sheet