
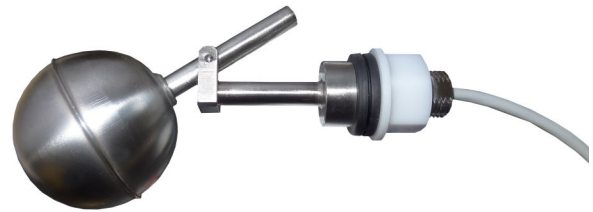


## GENERAL CHARACTERISTICS

This level switch, with its reduced overall dimensions and simplicity of installation, offers a reliable solution for the control of liquids in all applications where it is necessary to mount a lateral type.

The standard version is for installation from inside the tank, on request, execution with possibility of mounting from outside the tank are available.

- Reed contact.
- Maximum working pressure 30 Bar.
- Maximum working temperature 110 °C
- Degree of protection IP65
- ATEX Exia  construction.



## TECHNICAL DATA Tab.1

DN	Process connection		Float S.G.	Max. pressure Bar	Max. temperature °C	Hysteresis mm	Weight g
	Assembly from inside	Assembly from outside					
16	M16 x 1,5	On request	0,67	30	110	8	190
					Class	L	

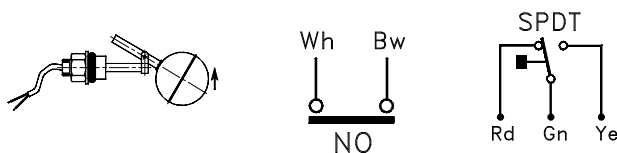
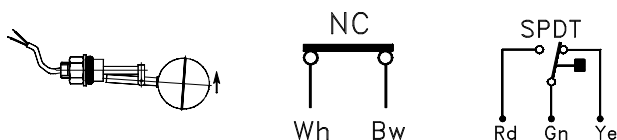
Male thread		Body material		Float material		Lever mechanism material	
K	M16 x 1,5	S		S52		--	
		AISI-316		AISI-316		AISI-316	

## ELECTRICAL CONTACT Tab.2

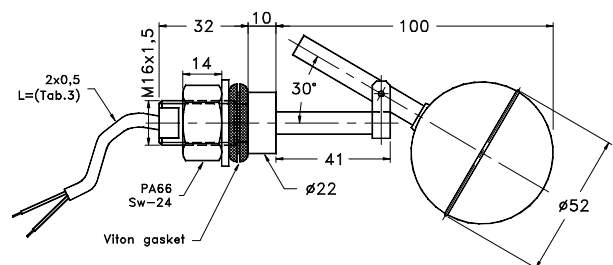
Type		Power		Voltage		Current	
		VA	W	AC	DC	AC	DC
3	SPST	70	50	300	350	0,5	0,7
7D	SPDT	20	20	150	150	0,5	0,5

## WIRING Tab.3

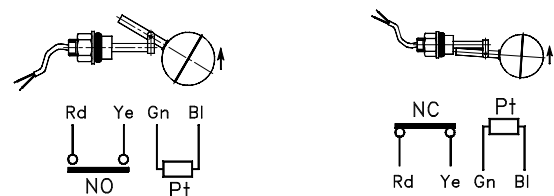
		Code
Cable	1,5 m.	C1
	3,0 m.	C2
Protection	-	IP65



## DIMENSIONS mm.



## PT100 PT1000 OPTIONS Tab.4



## NOMENCLATURE

L1	S52	SML	3	16	KS	C1L	PT100
•							
	•						
		•					
			•				
				•			
					•		
						•	
							•

-	Lateral installation – 1 contact
Tab.1	Float
-	Type
Tab.2	Electrical contact
Tab.1	Process connection dimension
Tab.1	Thread, process connection and body material
Tab.1-3	Electrical output – temperature class
Tab.4	Pt 100 - Pt 1000 sensor option