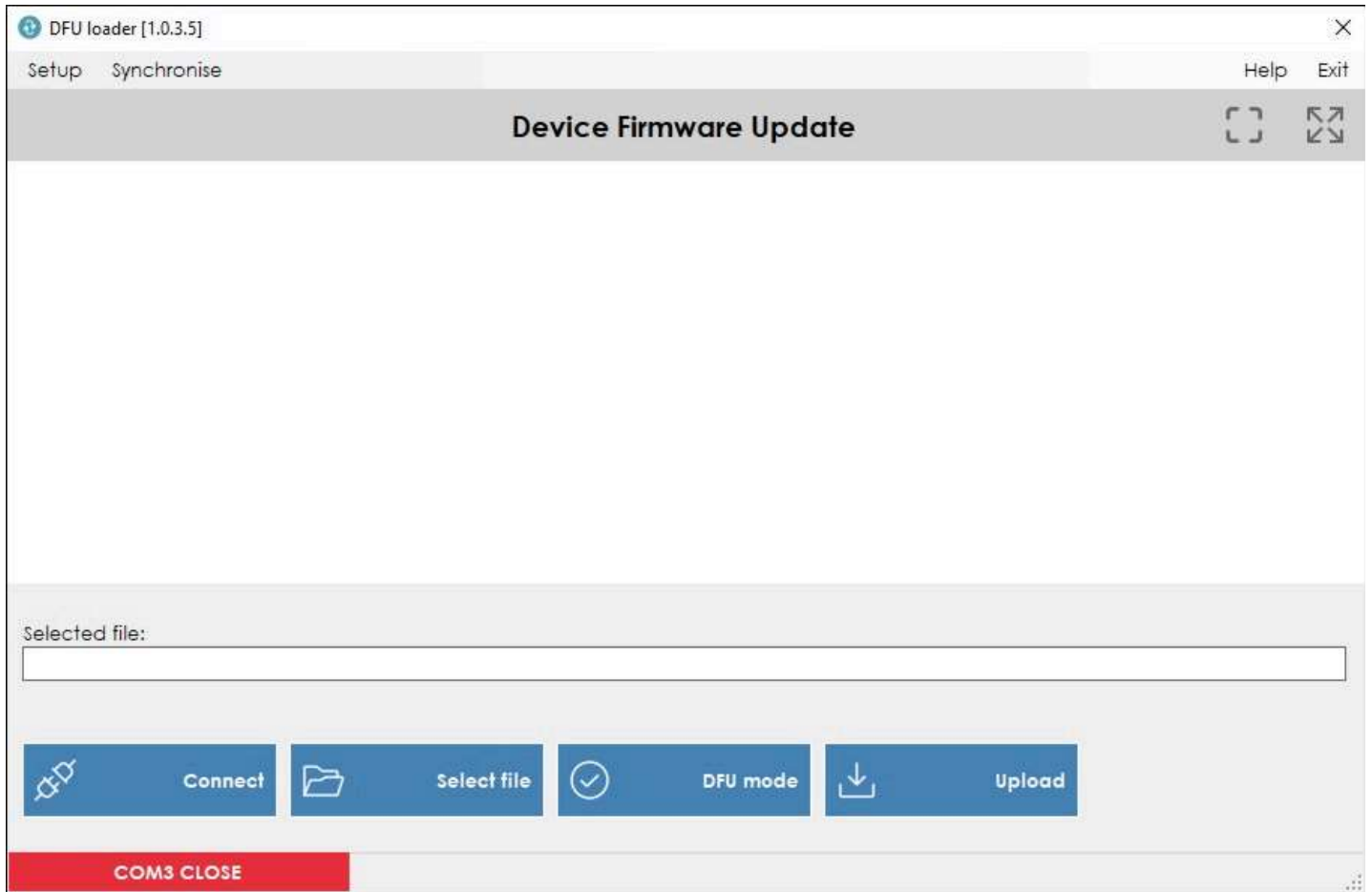


SW_DFU_Update Manual

Start the application by double clicking on its icon on the desktop or select the *SW_DFU_Update* item in the *Senseca* folder found in the Start menu. The following window opens:



Updating mode

The program can operate in automatic mode or in user-controlled mode. In automatic mode, only the **Connect** button is needed, which will start a wizard. The **Select file**, **DFU mode** and **Upload** buttons are used if the update is to be performed in user-controlled mode.

The **Setup >> Automatic mode** menu item allows enabling/disabling the display of the **Select file**, **DFU mode** and **Upload** buttons used in user-controlled mode. The menu item is "Toggle" type, the option is enabled/disabled each time it is selected.

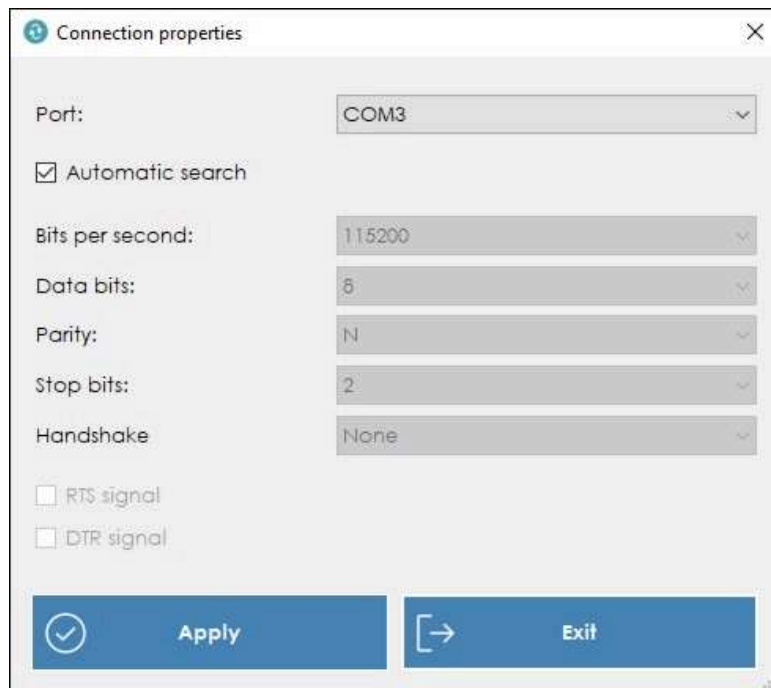
Checking for new firmware updates

The software already includes a folder with the most up-to-date firmware at the time the software was released. If your PC is connected to the Internet, you can check for new firmware updates by selecting the **Synchronise** menu item. If there are new updates, the message "Downloaded files and updated local files" will appear, otherwise the message "The firmware folder is already updated" will appear.

Connecting the instrument

The instrument must be turned on and connected to a PC USB port. The **Pro Line** series instruments with **logging** function must have the USB mode set to "**COM Interface**" (non-logging versions are always in that mode) and **any running logging session must be stopped**.

The software can automatically search for an instrument connected to the PC by scanning available ports, or the COM port can be set manually. Select the **Setup >> Serial connection setup** menu item, then select the "**Automatic search**" option to automatically search for an instrument connected to the PC, or uncheck the option to manually set the COM port (the communication parameters are fixed). Press **Apply** to confirm.



Automatic update

- Press **Connect**, the software checks the version of the firmware installed in the instrument. If the installed firmware is already the latest version, the message "*The device is up-to-date*" appears. If a more updated version of the installed firmware is available, a message indicating the installed version and the updated version available for installation appears, with a prompt to confirm the update.
- Press "Yes" to proceed with the update: the instrument display will turn off.
- Wait for the message "*Upload completed*" to appear and press "OK" to continue.
- Wait for the following window to appear, then press the ON/FF button on the instrument (the display remains off) and subsequently press **CONTINUE** in the software window.



- Wait for the instrument display to automatically turn on again.
- The update is completed: press **Exit** to close the software window.

User-controlled update

In user-controlled mode, the **Select file**, **DFU mode** and **Upload** buttons should be visible. If they are not, select the **Setup >> Automatic mode** menu item.

- Press **Connect**, the software checks the version of the firmware installed in the instrument. If the installed firmware is already the latest version, the message "*The device is up-to-date*" appears. If a more updated version of the installed firmware is available, a message indicating the installed version and the updated version available for installation appears, with a prompt to confirm the update.
- Press "No" when asked to confirm the update.
- Press the **Select file** button and select the update file of extension "hex."
- Press the **DFU mode** button: the instrument display will turn off.
- Press the **Upload** button.

- Wait for the message "*Upload completed*" to appear and press "OK" to continue.
- Wait for the following window to appear, then press the ON/FF button on the instrument (the display remains off) and subsequently press **CONTINUE** in the software window.



- Wait for the instrument display to automatically turn on again.
- The update is completed: press **Exit** to close the software window.

Menu

Setup >> Serial connection setup: selection of COM automatic search or manual setting.

Setup >> Run as Administrator: enables/disables (Toggle) the execution of the program with administrator privileges.

Setup >> Automatic mode: enables/disables (Toggle) the display of user-controlled update buttons.

Setup >> "Language": selection of the software language.

Synchronise: checks for new firmware updates.

Help: opens the software online manual.

Exit: closes the software.

Troubleshooting

• Device not found:

- Make sure the device is connected to the USB port, switched on and set in "COM interface" mode.
- Check whether the device is visible in Windows "Device Manager" under "Ports (COM & LPT)".
- Manually select the COM port in "Setup >> Serial connection setup" of SW_DFU_Update software.

• No firmware update file found:

- The device may already have updated firmware.
- Select "Synchronize" to check online for updates.
- Devices with firmware versions lower than "1.2.0.0" cannot be updated with this software: please, contact the manufacturer.

• The update has been completed but the device will not switch back on:

- Disconnect the USB cable, remove the batteries from the device, wait 10 seconds, reconnect the batteries and switch on the device.